

1

2

3

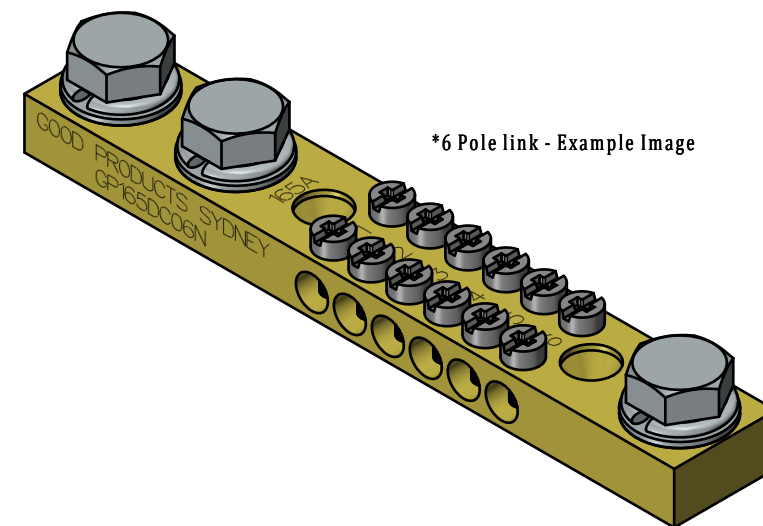
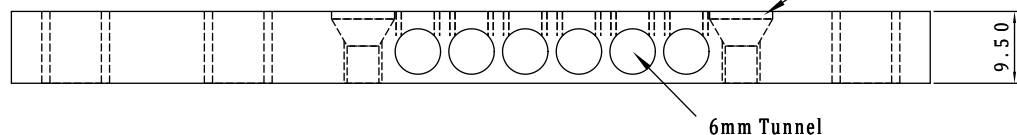
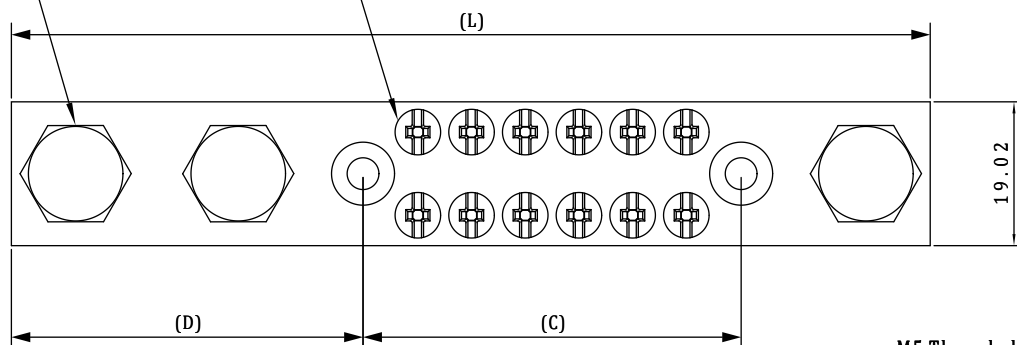
4

5

6

M8 Screws + Flat washers

M5x10mm Screws



M5 Threaded Mounting hole

6mm Tunnel

165A Series	Product Code	L	D	C	Mounting Holes
6 Poles	GP165DC06N	121.5	46.5	50	2
12 Poles	GP165DC12N	164.5	46.5	50	2
18 Poles	GP165DC18N	205.5	46.5	120	2
24 Poles	GP165DC24N	248	74.5	120	2
30 Poles	GP165DC30N	290	88.5	120	2
36 Poles	GP165DC36N	333	117	120	2
42 Poles	GP165DC42N	375.5	131.5	120	2
48 Poles	GP165DC48N	418	160	120	2
54 Poles	GP165DC54N	460.5	174	120	2
60 Poles	GP165DC60N	503	188	120	2
72 Poles	GP165DC72N	601	117	120	4
84 poles	GP165DC84N	686.5	160	120	4
96 Poles	GP165DC96N	772	145.5	120	4
108 Poles	GP165DC108N	857	188	120	4

L - Overall Length

D - Distance to First Mounting Hole

C - Mounting Holes Centre distance

All dimensions in MM

Responsible dept. : PRODUCTION

Created by: RUPESH

Approved by: ANDREW

GOOD PRODUCTS SYDNEY

Title: 165A BRASS LINKS

Date: 05/05/2022

