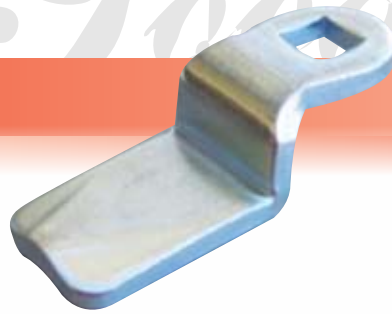




Tongues



BH (Bending Height) Also Referred to as Offset	Overall Height When used with 18mm Quarter Turn Body	Mild Steel Zinc Plated T = 3mm	Stainless Steel G304 T = 4mm
-4	14	3800-14	
0	18	3800-18	3500-18SS
2	20	3800-20	
4	22	3800-22	
6	24	3800-24	
7	25	3800-25	
8	26	3800-26	3500-26SS
10	28	3800-28	3500-28SS
12	30	3800-30	
14	32	3800-32	3500-32SS
16	34	3800-34	
20	38	3800-38	
22	40	3800-40	
24	42		3500-42SS
26	44	3800-44	3500-44SS
30	48	3800-48	
32	50	3800-50	3500-50SS
38	56	3800-56	
44	62	3800-62	
50	68	3800-68	

