

1

2

3

4

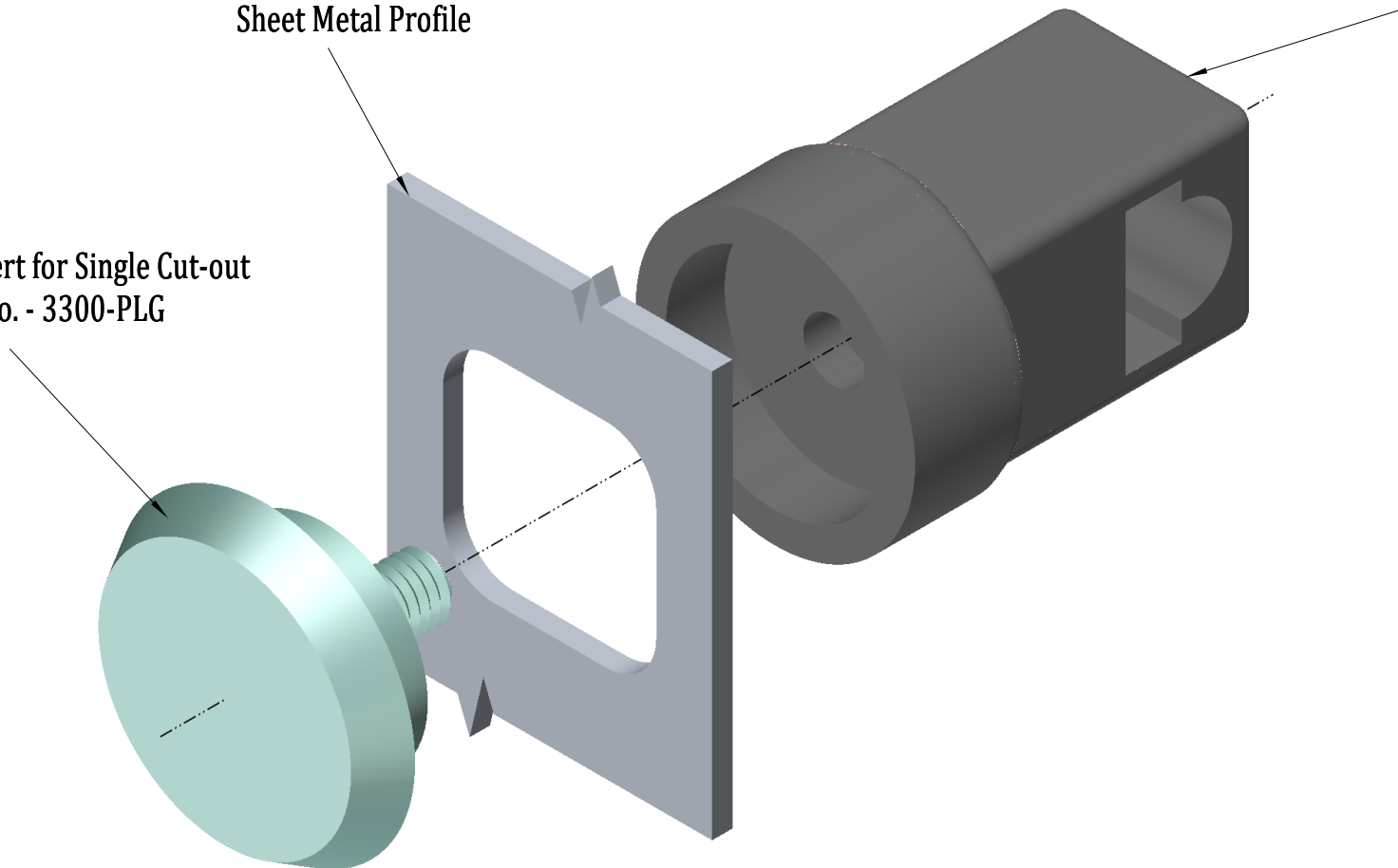
5

6

Sheet Metal Profile

Rod Guide
Part No. - 3200-28

Blanking Insert for Single Cut-out
Part No. - 3300-PLG





A

B

C

D

Responsible dept.: PRODUCTION	Title: BLANKING INSERT ASSEMBLY	Approved by GOOD PRODUCTS SYDNEY		Created by RUPESH
Specification: Material - Polyamide Colour - Black		Instructions: M6 Threading		Angle: 3RD ANGLE 
		Tolerance: ±0.10		Scale: 2:1
Rev. 1.1	Date of issue 10.05.2022	Lang.	Sheet 1 / 1	